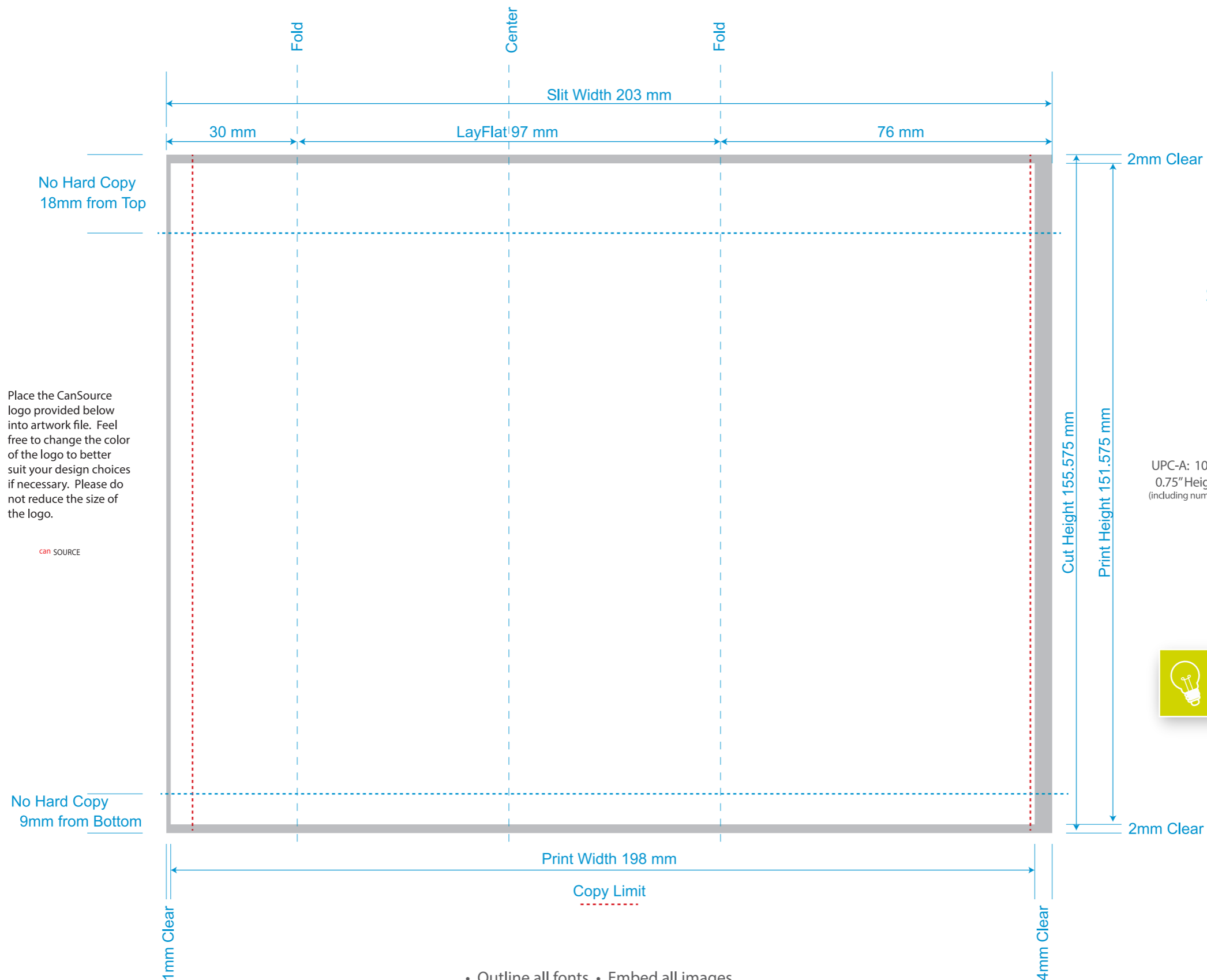


12/22/20
 Template No. 11,924.1
 97mmLF x 155.575mmCL
 Slit Width 203mm
 Image Width 198mm
 Image Height 151.575mm
 98T • 2 Around



203mm (7.9921") x 155.575mm (6.125") overall
 198mm x 151.575mm graphics area



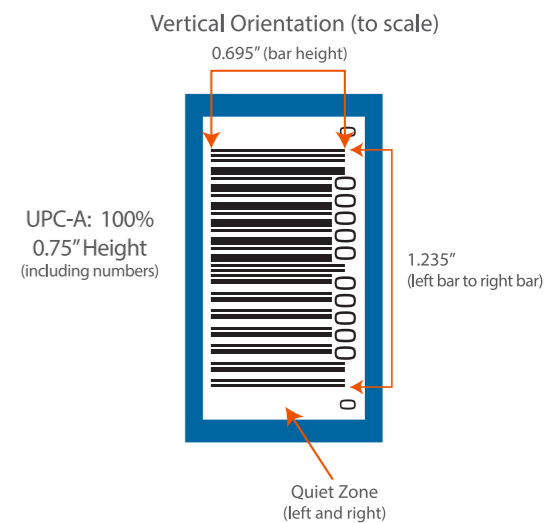
No Hard Copy
18mm from Top

Place the CanSource logo provided below into artwork file. Feel free to change the color of the logo to better suit your design choices if necessary. Please do not reduce the size of the logo.



No Hard Copy
9mm from Bottom

12oz Slim Template
**SUGGESTED BARCODE
 PLACEMENT AND SIZE:**




TIP: Avoid creating barcodes using red, light pink, orange, light brown, yellow, white, and metallic colors.

- Outline all fonts • Embed all images
- No critical copy should be placed outside of copy limit lines

TECHNICAL SWATCHES

These swatches are used to show size, folds, and copy limit ONLY. Do not manipulate or use them in the design of your artwork.

 Clear: No ink in this area

WHITE INK SWATCH

This swatch should only be used on the "White Layer" to indicate where white ink needs to print.

 WhiteX1