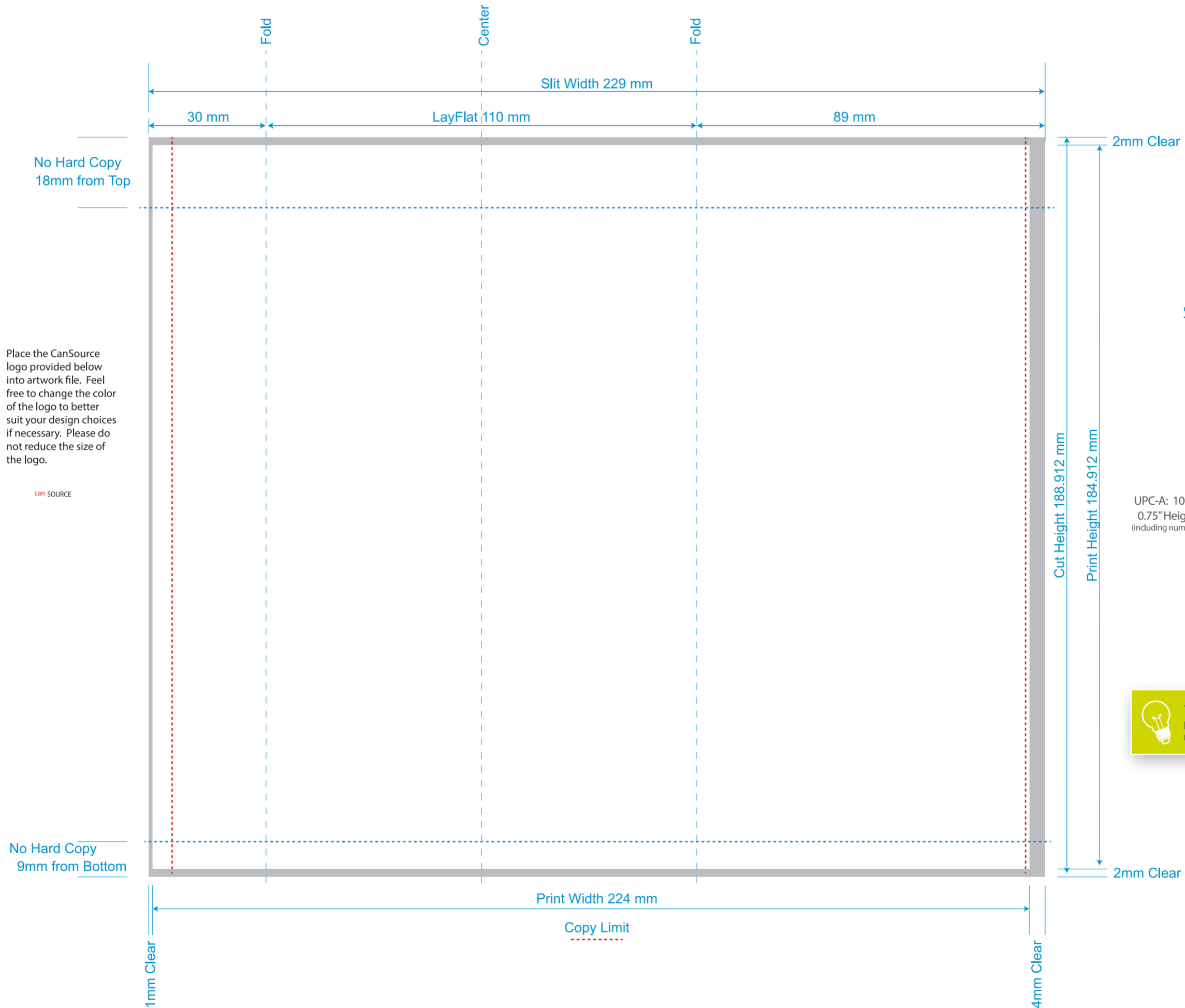


12/22/20  
 Template No. 11,920 .1  
 110mmLF x 188.912mmCL  
 Slit Width 229mm  
 Image Width 224mm  
 Image Height 184.912mm  
 119T • 2 Around



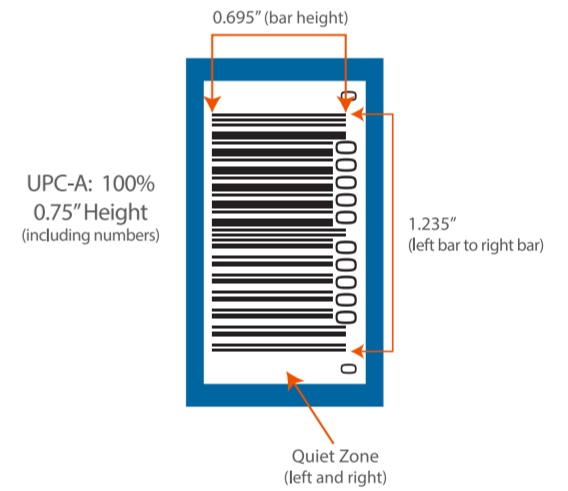
229mm (9.0157") x 188.912mm (7.4374") overall  
 224mm x 184.912mm graphics area



Place the CanSource logo provided below into artwork file. Feel free to change the color of the logo to better suit your design choices if necessary. Please do not reduce the size of the logo.



19.2oz Template  
**SUGGESTED BARCODE PLACEMENT AND SIZE:**  
 Vertical Orientation (to scale)

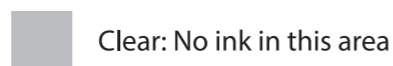


**TIP:** Avoid creating barcodes using red, light pink, orange, light brown, yellow, white, and metallic colors.

- Outline all fonts • Embed all images
- No critical copy should be placed outside of copy limit lines

**TECHNICAL SWATCHES**

These swatches are used to show size, folds, and copy limit ONLY. Do not manipulate or use them in the design of your artwork.



**WHITE INK SWATCH**

This swatch should only be used on the "White Layer" to indicate where white ink needs to print.

