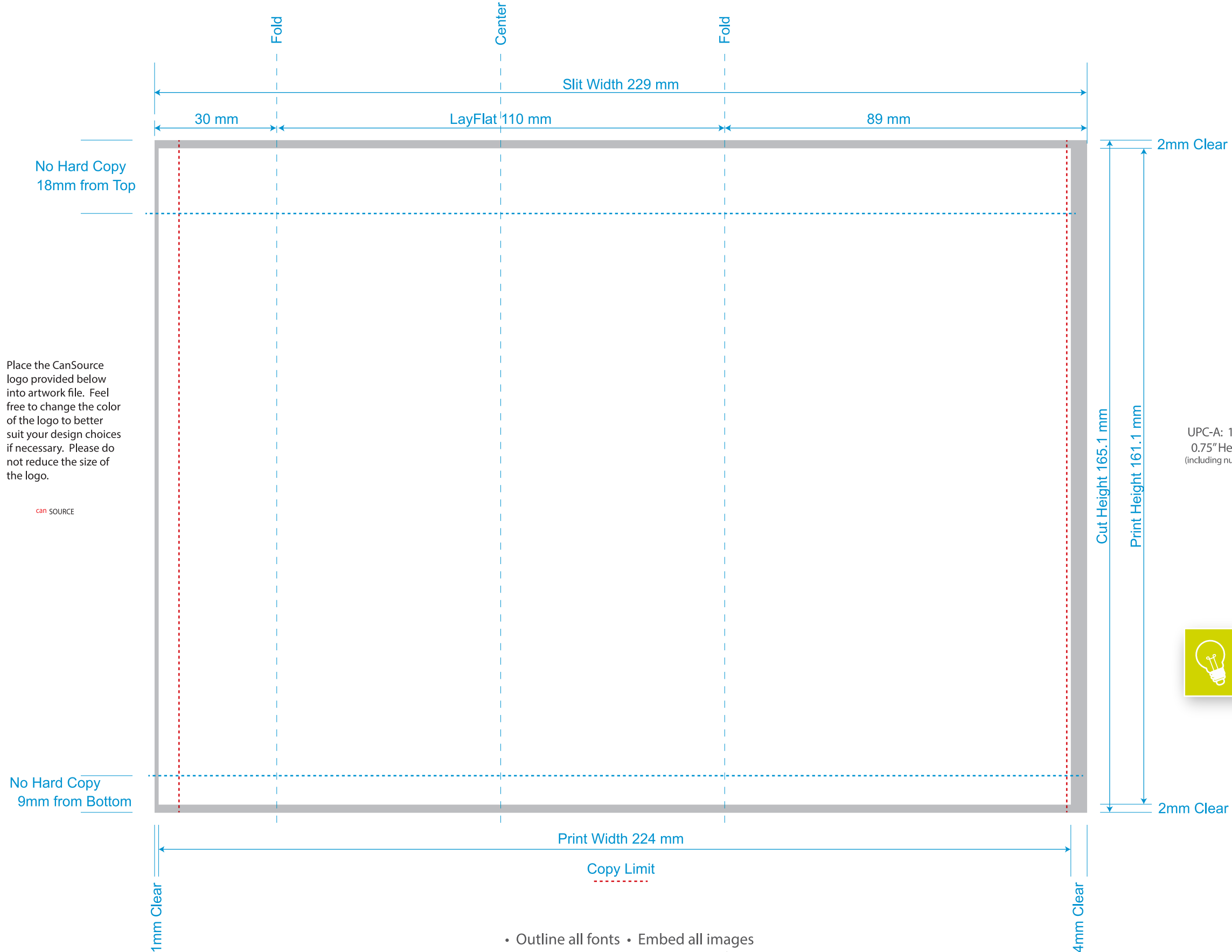


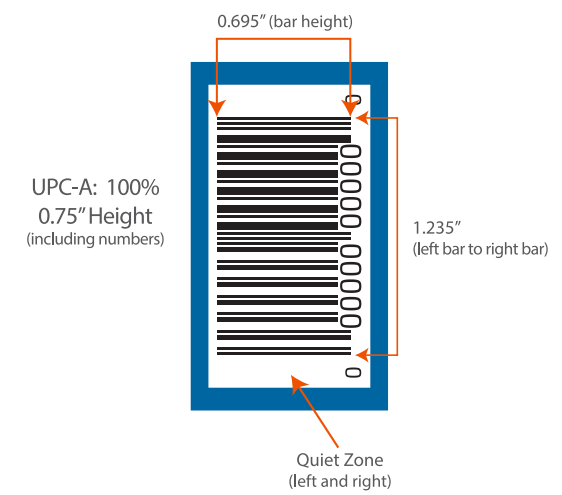
12/22/20  
 Template No. 11,923.1  
 110mmLF x 165.1mmCL  
 Slit Width 229mm  
 Image Width 224mm  
 Image Height 161.1mm  
 104T • 2 Around



229mm (9.0157") x 165.1(6.5") overall  
 224mm x 161.1mm graphics area



500mL Template  
**SUGGESTED BARCODE  
 PLACEMENT AND SIZE:**  
 Vertical Orientation (to scale)



**TIP:** Avoid creating barcodes using red, light pink, orange, light brown, yellow, white, and metallic colors.

- Outline all fonts • Embed all images
- No critical copy should be placed outside of copy limit lines

**TECHNICAL SWATCHES**

These swatches are used to show size, folds, and copy limit ONLY. Do not manipulate or use them in the design of your artwork.

Clear: No ink in this area

**WHITE INK SWATCH**

This swatch should only be used on the "White Layer" to indicate where white ink needs to print.

WhiteX1