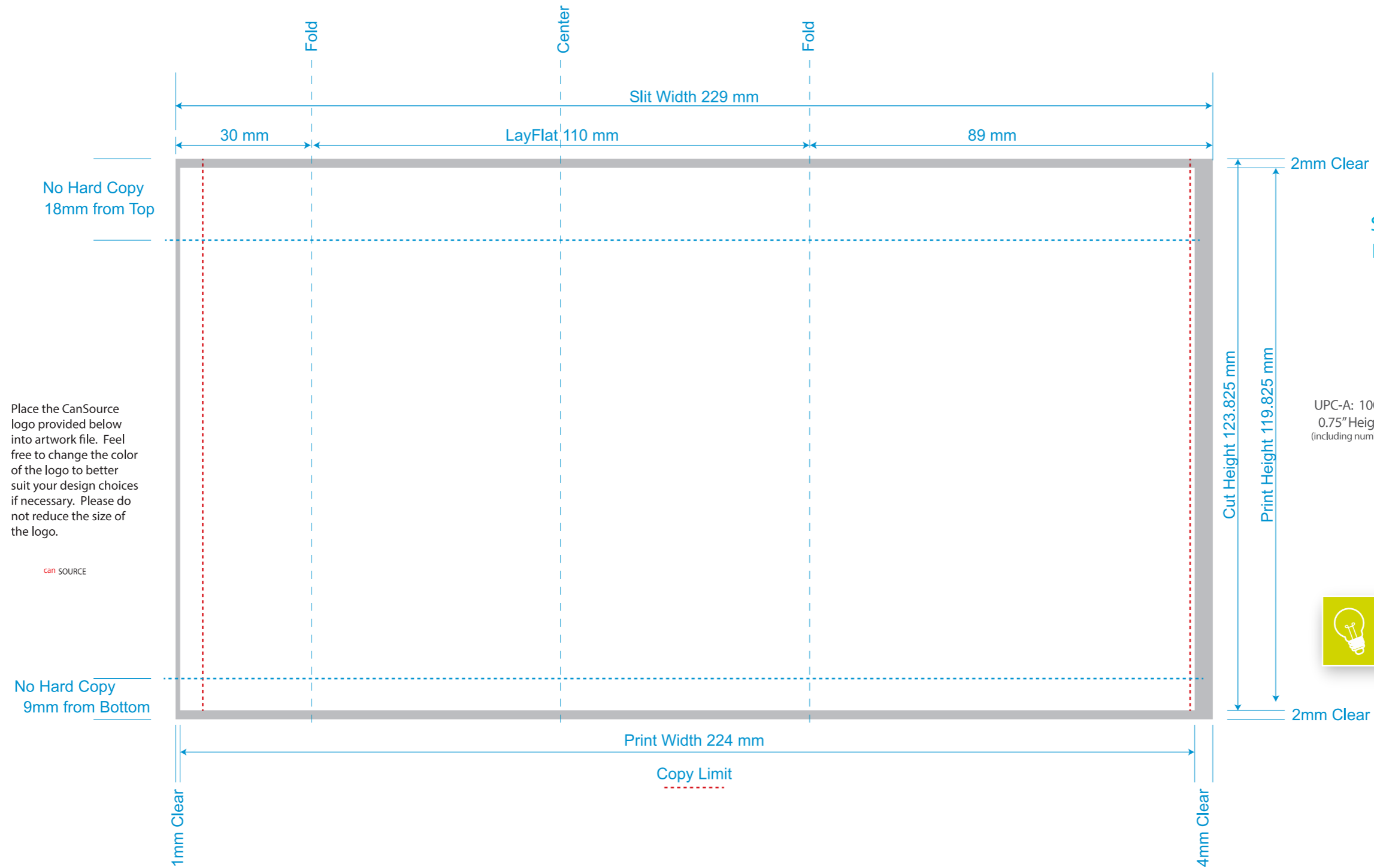


Template No. 11,926.0
 12/22/20
 Template No. 11,926.1
 110mmLF x 123.825mmCL
 Slit Width 229mm
 Image Width 224mm
 Image Height 119.825 mm
 117T • 3 Around



229mm (9.0157") x 123.825mm (4.875") overall
 224mm x 119.825mm graphics area

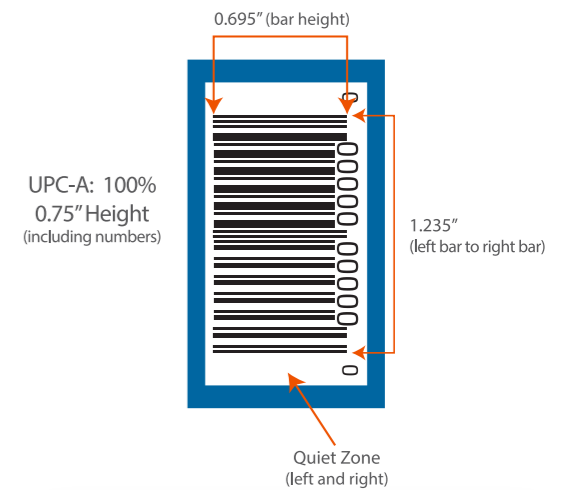


Place the CanSource logo provided below into artwork file. Feel free to change the color of the logo to better suit your design choices if necessary. Please do not reduce the size of the logo.



12oz Template
SUGGESTED BARCODE PLACEMENT AND SIZE:

Vertical Orientation (to scale)

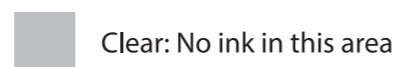


TIP: Avoid creating barcodes using red, light pink, orange, light brown, yellow, white, and metallic colors.

- Outline all fonts • Embed all images
- No critical copy should be placed outside of copy limit lines

TECHNICAL SWATCHES

These swatches are used to show size, folds, and copy limit ONLY. Do not manipulate or use them in the design of your artwork.



WHITE INK SWATCH

This swatch should only be used on the "White Layer" to indicate where white ink needs to print.

